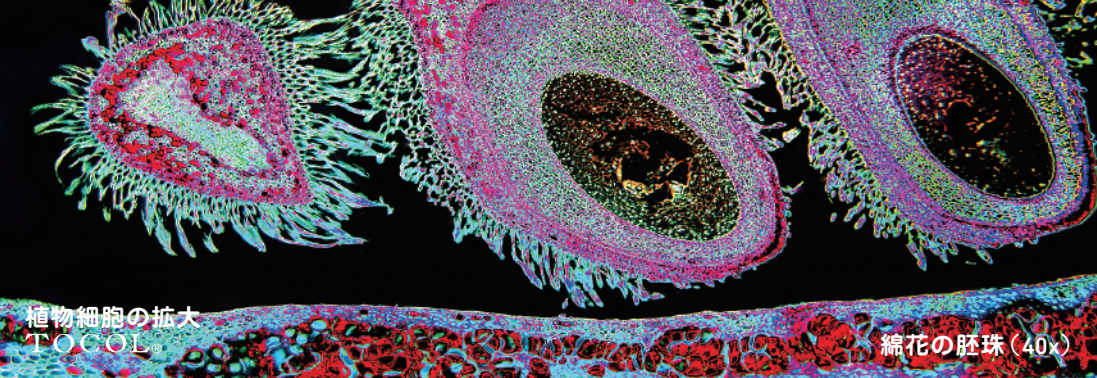




MicroGraphia

TOCOL®



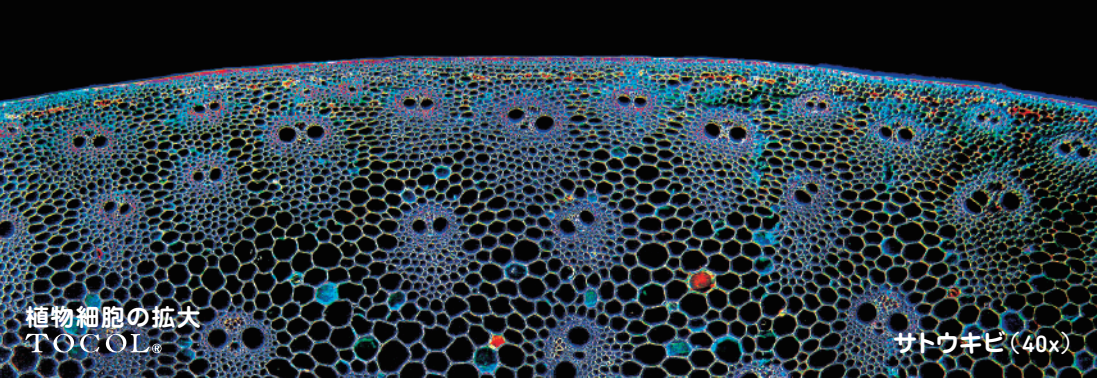
植物細胞の拡大
TOCOL®

綿花の胚珠 (40x)

A detailed micrograph of a plant stem cross-section, likely from an endive, showing a clear arrangement of cells. The image is colorized, with cell walls appearing in shades of red and blue, and the interior of the cells in black. The structure shows a central vascular cylinder surrounded by cortical cells. The overall shape is curved, following the natural arc of the stem.

植物細胞の拡大
TOCOL®

エンドウの莖 (40x)



植物細胞の拡大
TOCOL®

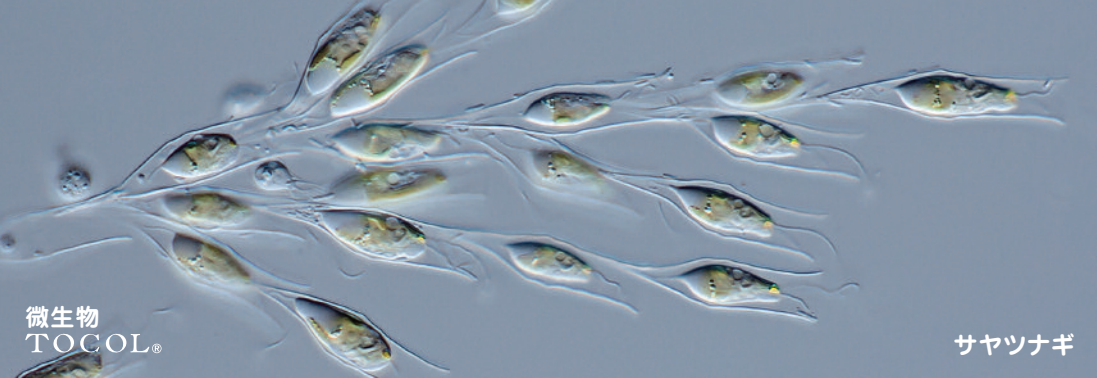
サトウキビ (40x)



微生物
TOCOL®



アメーバとミドリゾウリムシ



微生物
TOCOL®

サヤツナギ